

DATAPRO 700 LASERSPEED® DISPLAY SYSTEM

Touch-Screen Display with Ethernet/IP

The DataPro 700 is a complete, multi-function system that enables you to quickly and easily display length, velocity, quality factor, and gauge status from the Beta LaserMike LaserSpeed gauge. Using a simple color touch-screen interface, you can easily configure LaserSpeed operating parameters. This compact and versatile display also lets you create and store gauge and process recipes, establish system security, set local language preferences, configure input/output signals, and more.

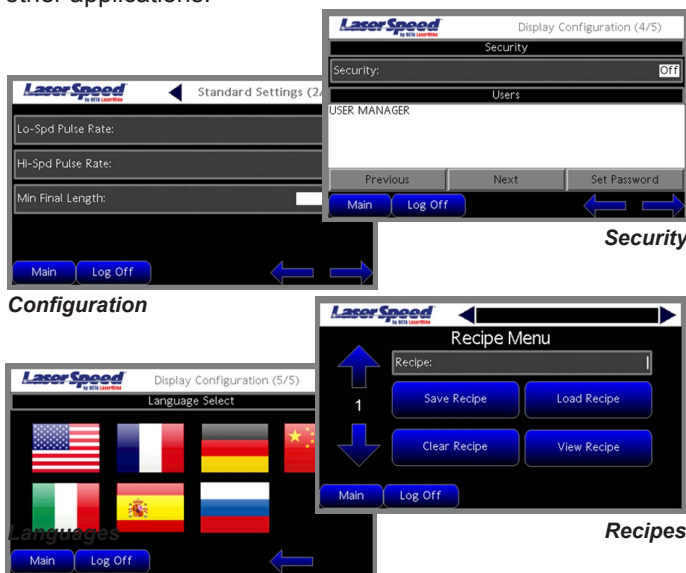
Supports Multiple Protocols for Maximum Communications Flexibility

The DataPro 700 display flexibly supports several communication protocols and enables you to communicate to multiple external devices simultaneously. You can communicate to the LaserSpeed gauge via high-speed RS-232 connection or Ethernet UDP socket. And, you can communicate to a PLC via EtherNet/IP at the same time via the same Ethernet network. Connect to a light stack or an alarm to notify operators when a process function exceeds tolerances and interface with a range of line devices to trigger critical process functions, such as cutting operations, printing/marking of products, adjusting line speed, and other applications.



Key Features and Benefits

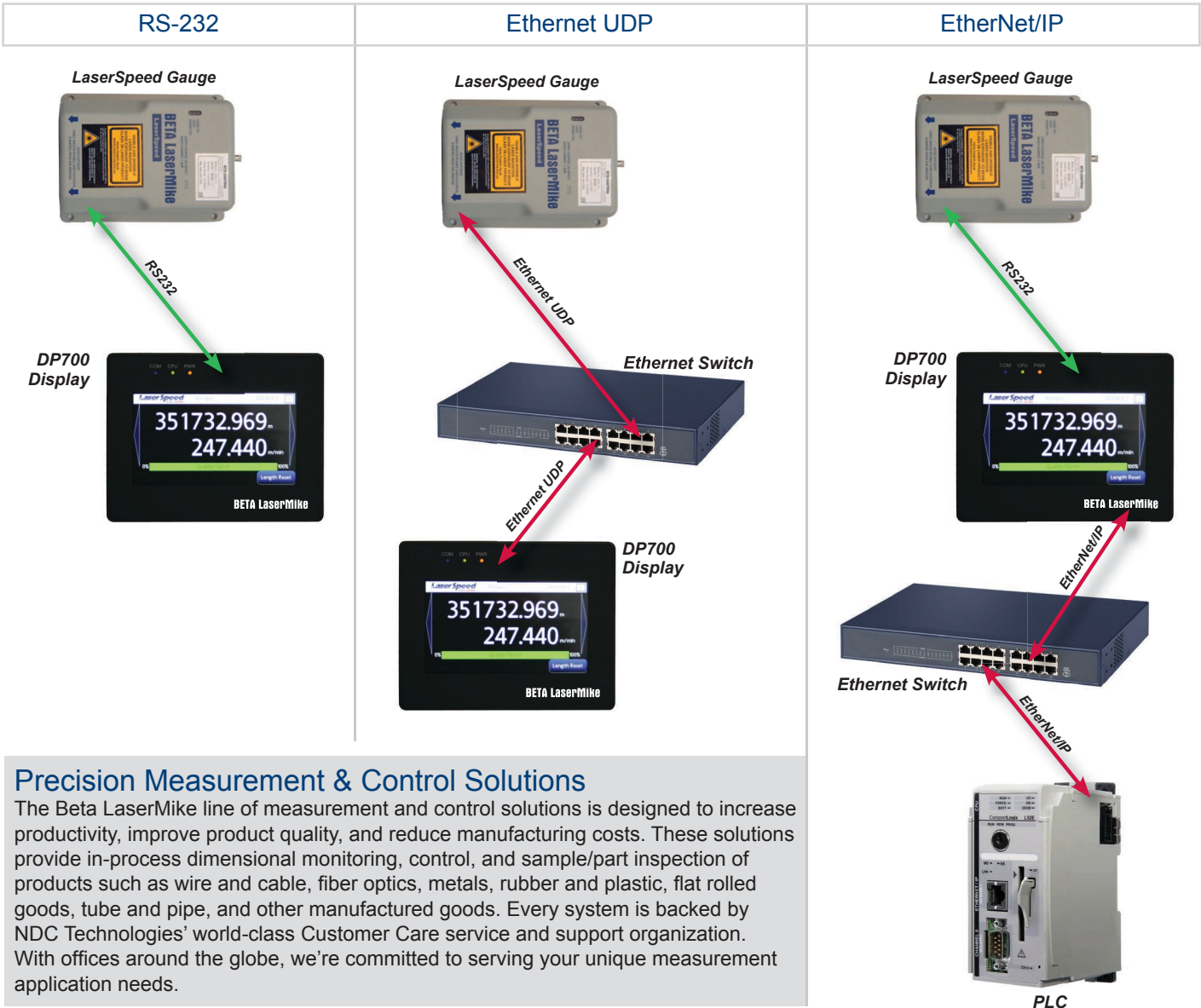
- ▶ Compact, bright color touch-screen display
- ▶ Display length, velocity, quality factor, and gauge status in real time
- ▶ Show length countdown from a preset length and activate an output when a threshold has reached
- ▶ Use extensive configuration capabilities to establish production settings, set up operating parameters, and configure I/O signals
- ▶ Manage up to 16 different gauge setting recipes and easily recall recipes for quick changeovers
- ▶ Set up security for users and system protection including access rights and password protection
- ▶ Supports multiple communication protocols simultaneously including RS-232, Ethernet UDP, and EtherNet/IP
- ▶ Available as a stand-alone display that can be panel mounted or as an integrated enclosure
- ▶ Optional display floor stand with flexible positioning to meet viewing needs



Easily configure LaserSpeed operating parameters and capture and display important gauge and process data, such as length, velocity, quality factor, and gauge status.

Supports Multiple Protocols for Multi-Interface Communications

The DataPro 700 display supports several protocols at the same time over the same Ethernet network, enabling you to communicate with the LaserSpeed gauge via Ethernet UDP and a PLC via EtherNet/IP.



Precision Measurement & Control Solutions

The Beta LaserMike line of measurement and control solutions is designed to increase productivity, improve product quality, and reduce manufacturing costs. These solutions provide in-process dimensional monitoring, control, and sample/part inspection of products such as wire and cable, fiber optics, metals, rubber and plastic, flat rolled goods, tube and pipe, and other manufactured goods. Every system is backed by NDC Technologies' world-class Customer Care service and support organization. With offices around the globe, we're committed to serving your unique measurement application needs.

NDC Technologies is represented in over 60 countries worldwide. www.ndc.com/betalasermike

a spectris company

NDC Americas
Tel: +1 937 233 9935
Email: sales@betalasermike.com

NDC China
Tel: +86 21 6113 3617
Email: sales@betalasermike.com

NDC India
Tel: +91 124 2789507
Email: sales@betalasermike.com

NDC United Kingdom
Tel: +44 1621 852244
Email: sales@betalasermike.com

NDC SE Asia
Tel: +65 91994120
Email: sales@betalasermike.com



In line with its policy of continuous improvement, NDC reserves the right to revise or replace its products or services without prior notice. The information contained in this document may not represent the latest specification and is for indicative purposes only.

Document #: M-BROC-DataPro 700-EN-2017OCT30
Date of Issue: October 2017
© NDC Technologies 2017