

# Benchtop Measurement Solutions



The BenchMike separates itself from other measurement devices with features that make it the industry's most accurate, reliable and easiest-to-use gauging system.

## Accuracy

- Patented optical design and electronics provide unequalled accuracy and exceptional repeatability
- Auto-calibration maintains accuracy throughout the measurement range and adjusts for temperature variation in shop-floor environments

## Reliability

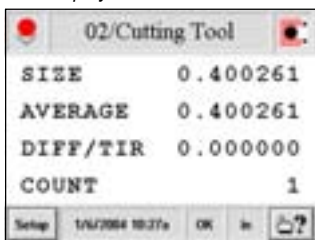
- Non-contact technique eliminates operator-influenced measurement error
- Little or no adjustment is required to measure a wide range of part sizes or dimensions
- Rugged cast housing is sealed against dust and moisture for use in factory-floor environments

## Ease-of-use

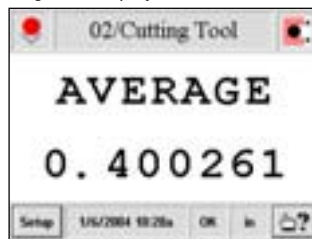
- Touch-screen interface and color graphical display provides a simple, yet powerful user interface
- Multiple product types can be stored and recalled at the touch of button
- Integrated I/O allows seamless use of automated part handling and motion control.



Data display



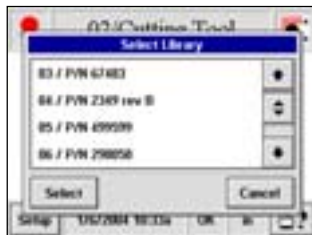
Magnified display



Pop-up menus



Library (part) selection



	4025S	4025G	4050S	4050G
<b>Measurement Range<sup>1</sup></b>	0.004 to 1.0 in. (0.10 to 25.4 mm)	0.004 to 1.0 in. (0.10 to 25.4 mm)	0.010 to 2.0 in. (0.25 to 50 mm)	0.010 to 2.0 in. (0.25 to 50 mm)
<b>Repeatability</b>	±0.000010 in. (±0.25 µm)	±0.000005 in. (±0.13 µm)	±0.000020 in. (±0.5 µm)	±0.000010 in. (±0.25 µm)
<b>Linearity</b>	±0.000036 in. (±0.9 µm)	±0.000020 in. (±0.5 µm)	±0.000060 in. (±1.5 µm)	±0.000030 in. (±0.76 µm)
<b>Measurement Area Passline</b>	2.21 in. (56.1 mm)	2.21 in. (56.1 mm)	3.05 in. (77.5 mm)	3.05 in. (77.5 mm)
<b>Measurement Area Depth of Field</b>	±0.030 x 1.0 in. (±0.75 x 25 mm)	±0.030 x 1.0 in. (±0.75 x 25 mm)	±0.060 x 2.0 in. (±1.5 x 50 mm)	±0.060 x 2.0 in. (±1.5 x 50 mm)
<b>Laser Beam Spot Size<sup>1</sup></b>	0.004 in. (100 µm)	0.004 in. (100 µm)	0.010 in. (250 µm)	0.010 in. (250 µm)

<sup>1</sup>Model 4025 available with special 0.001 in. (25 µm) laser beam spot size designed for applications measuring small parts or characteristics.

(Note: Measurement range limited to 12 mm maximum)